

TECHNICAL MANUAL

**ORGANIZATIONAL, DIRECT SUPPORT, AND GENERAL SUPPORT MAINTENANCE
REPAIR PARTS AND SPECIAL TOOLS LISTS
(INCLUDING DEPOT MAINTENANCE REPAIR PARTS AND SPECIAL TOOLS)**

FOR

**RADIO TERMINAL SETS AN/TRC-145(V)1 , AN/TRC-145(V)2,
AN/TRC-145(V)3, AN/TRC-145A(V)1 , AN/TRC-145A(V)2,
AND AN/TRC-145A(V)3
(NSN 5820-00-791-3365)**

This copy is a reprint which includes current
pages from Changes 1.

TECHNICAL MANUAL }
 No. 11-5895-453-24P }

HEADQUARTERS
 DEPARTMENT OF THE ARMY
 WASHINGTON, DC, 18 June 1976

**ORGANIZATIONAL, DIRECT SUPPORT, AND GENERAL SUPPORT MAINTENANCE
 REPAIR PARTS AND SPECIAL TOOLS LISTS
 (INCLUDING DEPOT MAINTENANCE REPAIR PARTS AND SPECIAL TOOLS)
 FOR
 RADIO TERMINAL SETS AN/TRC-145(V)1, AN/TRC-145(V)2,
 AN/TRC-145(V)3, AN/TRC-145A(V)1, AN/TRC-145A(V)2, AND AN/TRC-145A(V)3
 (NSN 5820-00-791-3365)**

Current as of 1 January 1976

REPORTING ERRORS AND RECOMMENDED IMPROVEMENTS

You can help improve this manual. If you find any mistakes or if you know of a way to improve the procedures, please let us know. Mail your letter, DA Form 2028 (Recommended Changes to Publications and Blank Forms), or DA Form 2028-2 located in back of this manual direct to Commander, US Army Communications and Electronics Materiel Readiness Command, ATTN: DRSEL-ME-MQ, Fort Monmouth, NJ 07703.

In either case, a reply will be furnished direct to you.

	Page	Illus Figure
SECTION I. Introduction	1	
II. Repair parts list	5	
GROUP 00 Radio Terminal Set AN/TRC-145(V)	5	1
01 Converter, Telephone Signal CV-1548/G (See TM 11-5805-367-25P/5 for parts).		
02 Multiplexer Set TD-660/U (See TM 11-5805-382-12 and TM 11-5805-382-35P for parts)		
03 Multiplexer Set TD-204/U (See TM 11-5805-367-25PV2 for parts)		
04 Radio Set AN/GRC-103 (See TM 11-5820-540-12 and TM 11-5820-540-35P-2 for parts)		
05 Shelter Facility S-390/TR-145	13	2
0501 Blower, exhaust (No parts authorized)		
0502 Heater (No parts authorized)		
0503 Power distribution panel.....	19	3
06 Intercommunication Station LS-147C/FI (See TM 11-5830-221-24P for parts)		
07 Telephone TA-312/PT (See TM 11-5805-201-12 and TM 11-5805-201-35 for parts)		
08 Multiplexer TD-754/G (See TM 11-5805-383-12 and TM 11-5805-383-35 for parts)		
09 Key Generator, Electronic TSEC/KG-27 (See TM 11-5810-232-12P and TM 11-5810-232-34P for parts)		
0901 Loopback kit	21	4
0902 Installation kit	23	5
SECTION III. Special tools list (Not applicable)		
IV. National stock number and part number index	24	

*This manual supersedes so much of TM 11-5895-453-14, 31 January 1973, as pertains to repair parts and special tools lists.

SECTION I

INTRODUCTION

1. Scope

This manual lists repair parts; special tools; and other support equipment required for performance of organizational, direct support and general support maintenance of the AN/TRC-145(V)1, EN/TRC-145(V)2, AN/TRC-145(V)3, AN/TRC-145A(V)1, AN/TRC-145A(V)2, and AN/TRC-145A(V)3.

2. General

These Repair Parts and Special Tools Lists are divided into the following sections:

a. Section II. Repair Parts List. A list of repair parts authorized for use in performance of maintenance. The list also includes parts which must be removed for replacement of the authorized parts. Parts lists are composed of functional groups in ascending numerical sequence, with the parts in each group listed in figure and item number sequence.

b. Section III. Special Tools List. Not applicable.

c. Section IV. National Stock Number and Part Number Index. A list, in ascending National item identification number (NIIN last 9 digits) sequence, of all National stock numbers appearing in the listings, followed by a list, in alphabetic sequence, of all part numbers appearing in the listings. National stock number and part numbers are cross-referenced to each illustration figure and item number appearance.

3. Explanation of Columns

The following provides an explanation of columns found in the tabular listings:

a. Illustration. This column is divided as follows:

(1) *Figure number.* Indicates the figure number of the illustration in which the item is shown.

(2) *Item number.* The number used to identify each item called out in the illustration.

b. Source, Maintenance, and Recoverability Codes (SMR).

(1) *Source code.* Source codes are assigned to support items to indicate the manner of acquiring support items for maintenance, repair

or overhaul of end items. Source codes are entered in the first and second positions of the Uniform SMR Code format as follows:

<i>Code</i>	<i>Definition</i>
PA	—Item procured and stocked for anticipated or known usage.
PD	—Support item, excluding support equipment procured for initial issue or outfitting and stocked only for subsequent or additional initial issues or outfitting. Not subject to automatic replenishment.
XD	—A support item that is not stocked. When required, item will be procured through normal supply channels.

NOTE

Cannibalization or salvage may be used as a source of supply for any items source coded above except those coded XD, and aircraft support items as restricted by AR 700-42.

(2) *Maintenance code.* Maintenance codes are assigned to indicate the levels of maintenance authorized to USE and REPAIR support items. The maintenance codes are entered in the third and fourth positions of the Uniform SMR Code format as follows:

(a) The maintenance code entered in the third position will indicate the lowest maintenance level authorized to remove, replace and use the support item. The maintenance code entered in the fourth position will indicate one of the following levels of maintenance:

<i>Code</i>	<i>Application/Explanation</i>
O	—Support item is removed, replaced, used at the organizational level.
F	—Support item is removed, replaced, used at the direct support level.

(b) The maintenance code entered in the fourth position indicates whether the item is to be repaired and identifies the lowest maintenance level with the capability to perform complete repair (i.e., all authorized maintenance functions). This position will contain one of the following maintenance codes:

- | | |
|-------------|--------------------------------|
| <i>Code</i> | <i>Application/Explanation</i> |
|-------------|--------------------------------|
- O—The lowest maintenance level capable of complete repair of the support item is the organizational level.
- H—The lowest maintenance level capable of complete repair of the support item is the general support level.
- D—The lowest maintenance level capable of complete repair of the support item is the depot level.
- Z—Nonreparable. No repair is authorized.

(3) *Recoverability code.* Recoverability codes are assigned to support items to indicate the disposition action on unserviceable items. The recoverability code is entered in the fifth position of the Uniform SMR Code format as follows:

- | | |
|-----------------------------|-------------------|
| <i>Recoverability Codes</i> | <i>Definition</i> |
|-----------------------------|-------------------|
- Z—Nonreparable item. When unserviceable, condemn and dispose at the level indicated in position 3.
- F—Reparable item. When uneconomically repairable, condemn and dispose at the direct support level.
- H—Reparable item. When uneconomically repairable, condemn and dispose at the general support level.
- D—Reparable item. When beyond lower level repair capability, return to depot. Condemnation and disposal not authorized below depot level.

c. National Stock Number. Indicates the National stock number assigned to the item and will be used for requisitioning purposes.

d. Part Number. Indicates the primary number used by the manufacturer (individual, company, firm, corporation, or Government activity), which controls the design and characteristics of the item by means of its engineering drawings, specifications standards, and inspection requirements, to identify an item or range of items.

NOTE

When a stock numbered item is requisitioned, the repair part received may have a different part number than the part being replaced.

e. Federal Supply Code for Manufacturer (FSCM). The FSCM is a 5-digit numeric code listed in SB 708-42 which is used to identify the manufacturer, distributor, or Government agency, etc.

f. Description. Indicates the Federal item name and, if required, a minimum description to identify the item.

g. Unit of Measure (U/M). Indicates the

standard of the basic quantity of the listed item as used in performing the actual maintenance function. This measure is expressed by a two-character alphabetical abbreviation (e.g., ea, in, pr, etc.). When the unit of measure differs from the unit of issue, the lowest unit of issue that will satisfy the required units of measure will be requisitioned.

h. Quantity Incorporated in Unit. Indicates the quantity of the item used in the breakout shown on the illustration figure, which is prepared for a functional group, subfunctional group, or an assembly.

4. Special Information

a. Usable on codes are shown in the description column. Uncoded items are applicable to all models. Identification of the usable on codes used in this publication are:

<i>Code</i>	<i>Used On</i>
2TL	AN/TRC-145(V)1
2TM	AN/TRC-145(V)2
2TN	AN/TRC-145(V)3
5A2	AN/TRC-145A(V)1
5A3	AN/TRC-145A(V)2
5A4	AN/TRC-145A(V)3

- b.* The following publications pertain to the AN/TRC-145(V)1, AN/TRC-145(V)2, AN/TRC-145(V)3, AN/TRC-145A(V)1, AN/TRC-145A(V)2, and AN/TRC-145A(V)3 and their components:
- TM 11-5805-201-12, Telephone Set TA-312/PT.
 - TM 11-5805-201-35, Telephone Set TA-312/PT.
 - TM 11-5805-367-25P/2, Multiplexer TD-204/U.
 - TM 11-5805-367-25P/5, Converter, Telephone Signal CV-1548/G, CV-1548A/G, and 18A4 Panel Assembly.
 - TM 11-5805-382-12, Multiplexer TD-660/G and TD-660A/G.
 - TM 11-5805-382-35P, Multiplexer TD-660A/G and Dual Inline Packaging Configuration.
 - TM 11-5805-383-12, Multiplexer TD-754/G.
 - TM 11-5805-383-35, Multiplexer TD-754/G.
 - TM 11-5810-232-12P, Communications Security Equipment TSEC KG-27.
 - TM 11-5810-232-34P, Communications Security Equipment TSEC KG-27.
 - TM 11-5820-540-12, Radio Sets AN/GRC-103(V)1, 2, and 3 and Extension Kit, Mast MK-1009/GRC-103(V).
 - TM 11-5820-540-35P-2, Radio Set AN/GRC-103(V)2.
 - TM 11-5830-221-24P, Intercommunications Station LS-147C/FI.
 - TM 11-5895-453-14, Radio Terminal Sets AN/TRC-145(V)1, AN/TRC-145(V)2, AN/TRC-145(V)3, AN/TRC-145A(V)1, AN/TRC-145A(V)2, and AN/TRC-145A(V)3.

5. How to Locate Repair Parts

a. When National stock number or part number is unknown:

(1) *First.* Using the table of contents, determine the functional group within which the repair part belongs. This is necessary since illustrations are prepared for functional groups, and listings are divided into the same groups.

(2) *Second.* Find the illustration covering the functional group to which the repair part belongs.

(3) *Third.* Identify the repair part on the illustration and note the illustration figure and item number of the repair part.

(4) *Fourth.* Using the Repair Parts Listing, find the figure and item number noted on the illustration.

b. When National stock number or part number is known:

(1) *First.* Using the Index of National Stock Numbers and Part Numbers, find the pertinent National stock number or part number. This index is in ascending NIIN sequence followed by a list of part numbers in ascending alphameric sequence, cross-referenced to the illustration figure number and item number.

(2) *Second.* After finding the figure and item number, locate the figure and item number in the repair parts list.

6. Abbreviations

Not applicable.

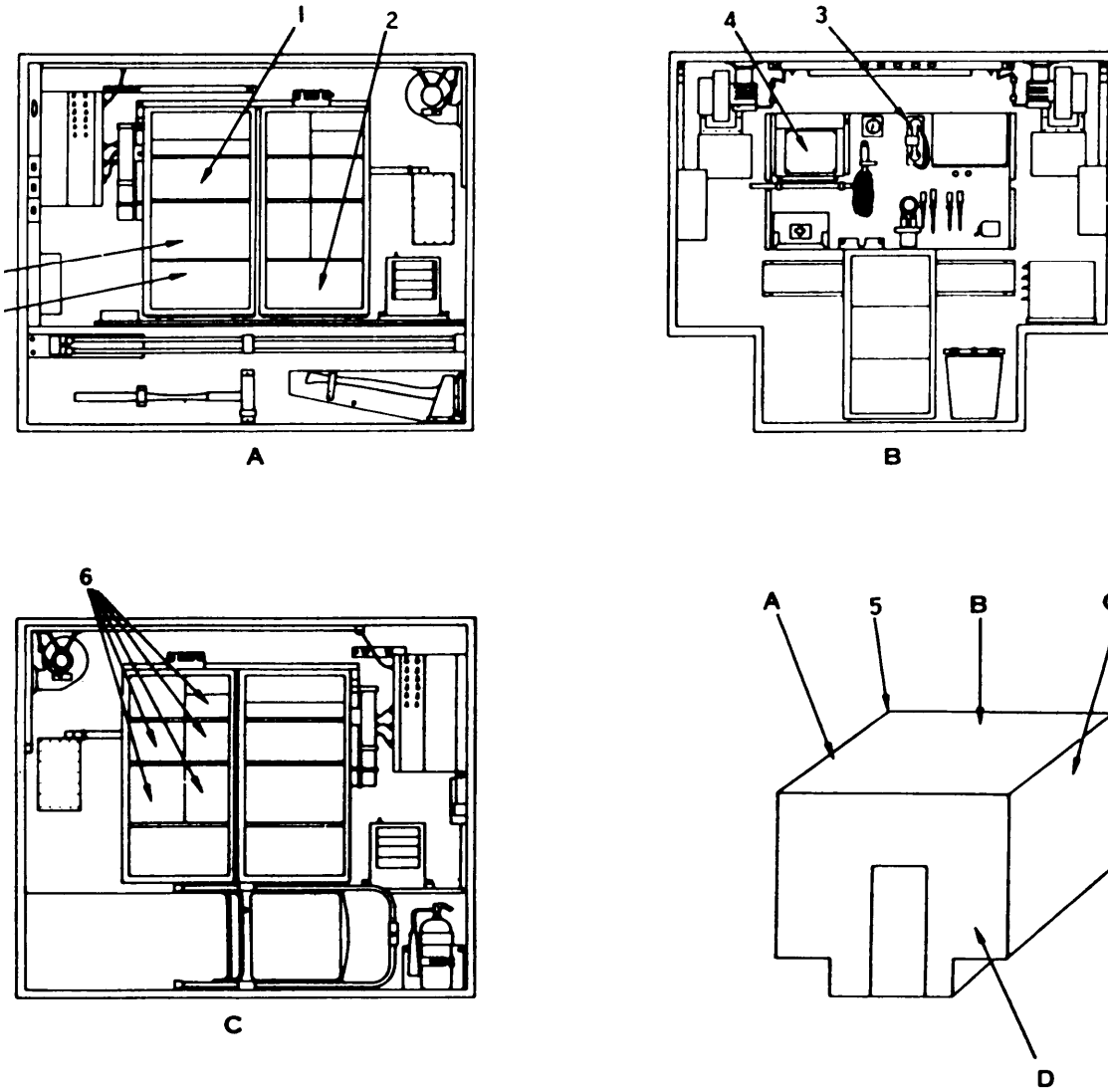


Figure 1. Radio Terminal Set AN/TRC-145.

SECTION II									
(1)	(2)	(3)	(4)	(5)	(6)		(7)	(8)	
ILLUSTRATION									
(a)	(b)		NATIONAL	PART		DESCRIPTION		INC	
FIG	ITEM	SMR	STOCK	NUMBER	FSCM		USABLE ON CODE	IN	
NO.	NO.	CODE	NUMBER	NUMBER				UNIT	
GROUP 00 RADIO TERMINAL SET AN/TRC-145(V)									
1	1	PODD		TSECKG27	80058	KFY GENERATOR,ELECTRONIC		EA	1
1	2	PODD	5805-00-900-8200	TD204U	80058	MULTIPLFXER		EA	2
1	2	PODD	5820-00-930-8078	TD754G	80058	OR MULTIPLFXER		EA	2
1	3	PODD	5805-00-543-0012	TA312PT	80058	TELEPHONE SET		EA	1
1	4	PODD	5830-00-752-5357	LS147CFI	80058	INTERCOMMUNICATION STATION		EA	1
1	5	PDFHH	5410-00-130-5806	5390IRC145	80058	SHFLTER FACILITY		EA	1
1	5	PDFHH		5390ATRC145	80058	OR SHELTER FACILITY		EA	1
1	5	PDFHH		5380ATRC145	80058	OR SHELTER FACILITY		EA	1
1	6	POCDD	5820-00-868-8137	ANGPC103V	80058	RADIO SET		EA	2
1	7	PODD	5805-00-069-8795	CV1548G	80058	CONVERTER,TELEPHONE SIGNAL		EA	2
1	8	PODD	5820-00-930-8079	TD600G	80058	MULTIPLXER		EA	2
1	8	PODD	5820-00-928-3382	TD660AG	80058	OR MULTIPLXER		EA	2

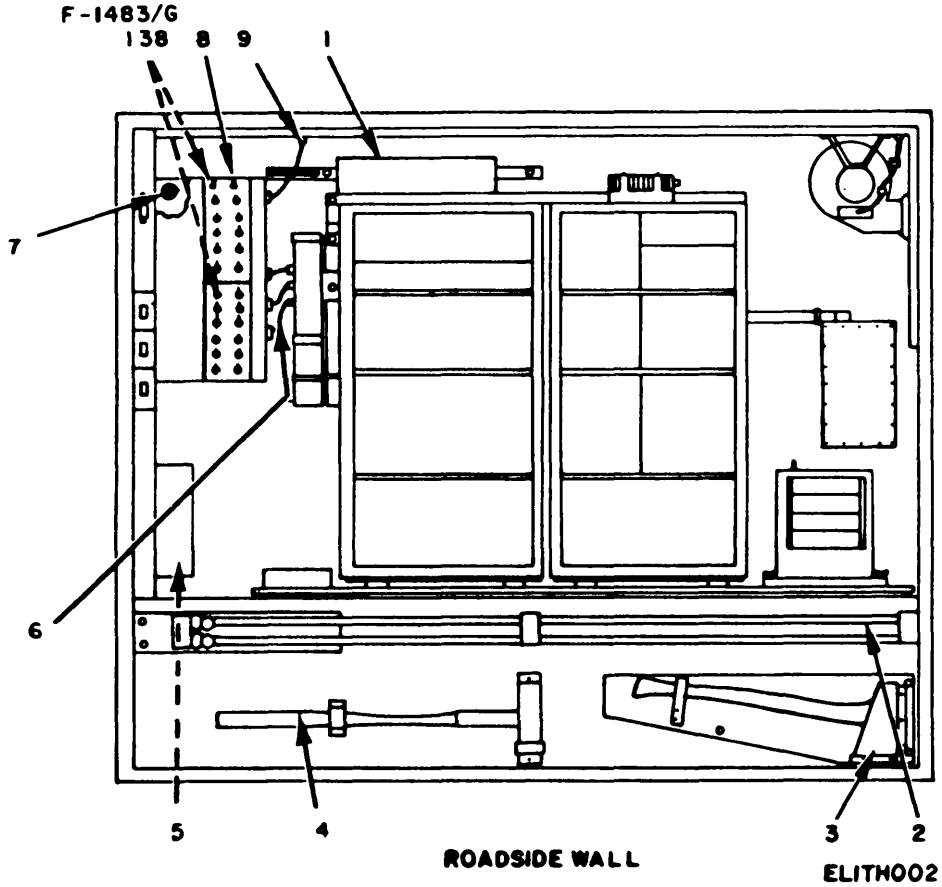


Figure 2. Shelter Facility S-390/TRC-145 (Sheet 1 of 6).

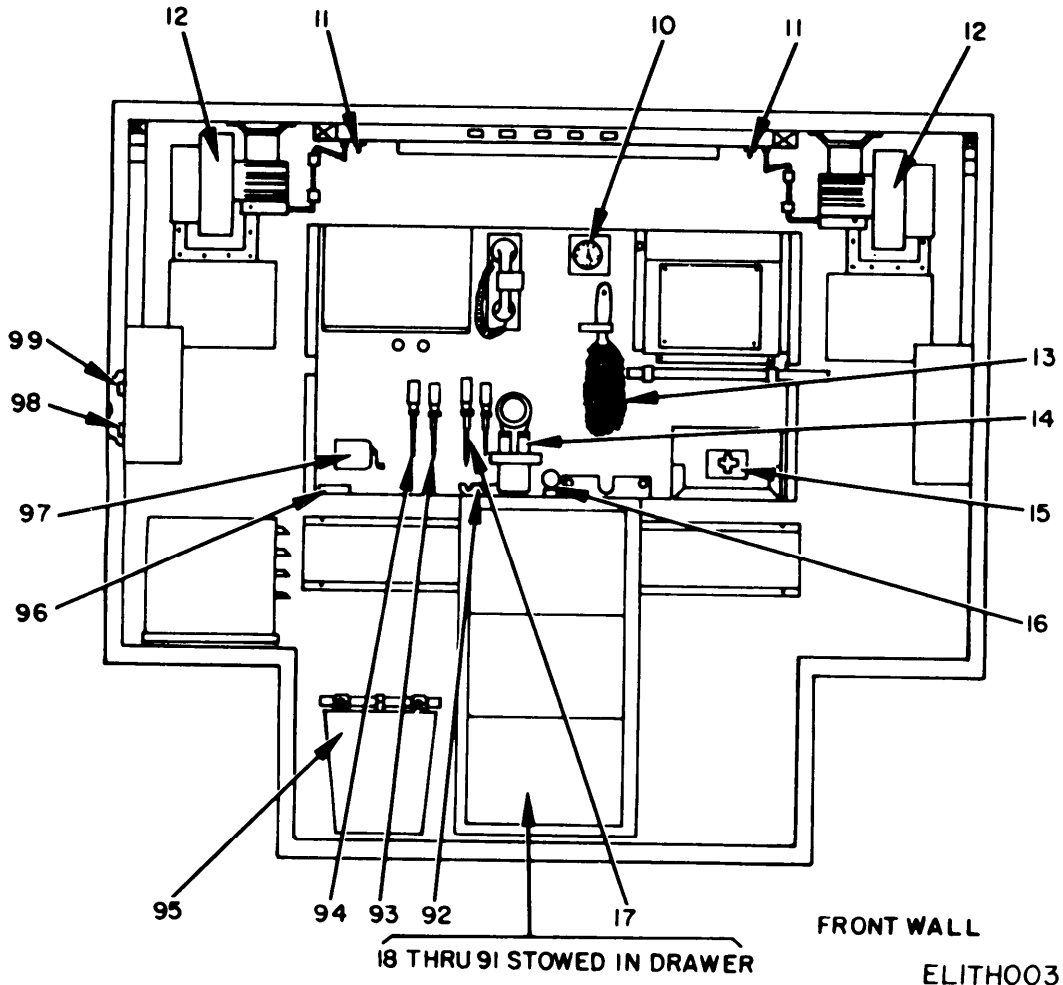
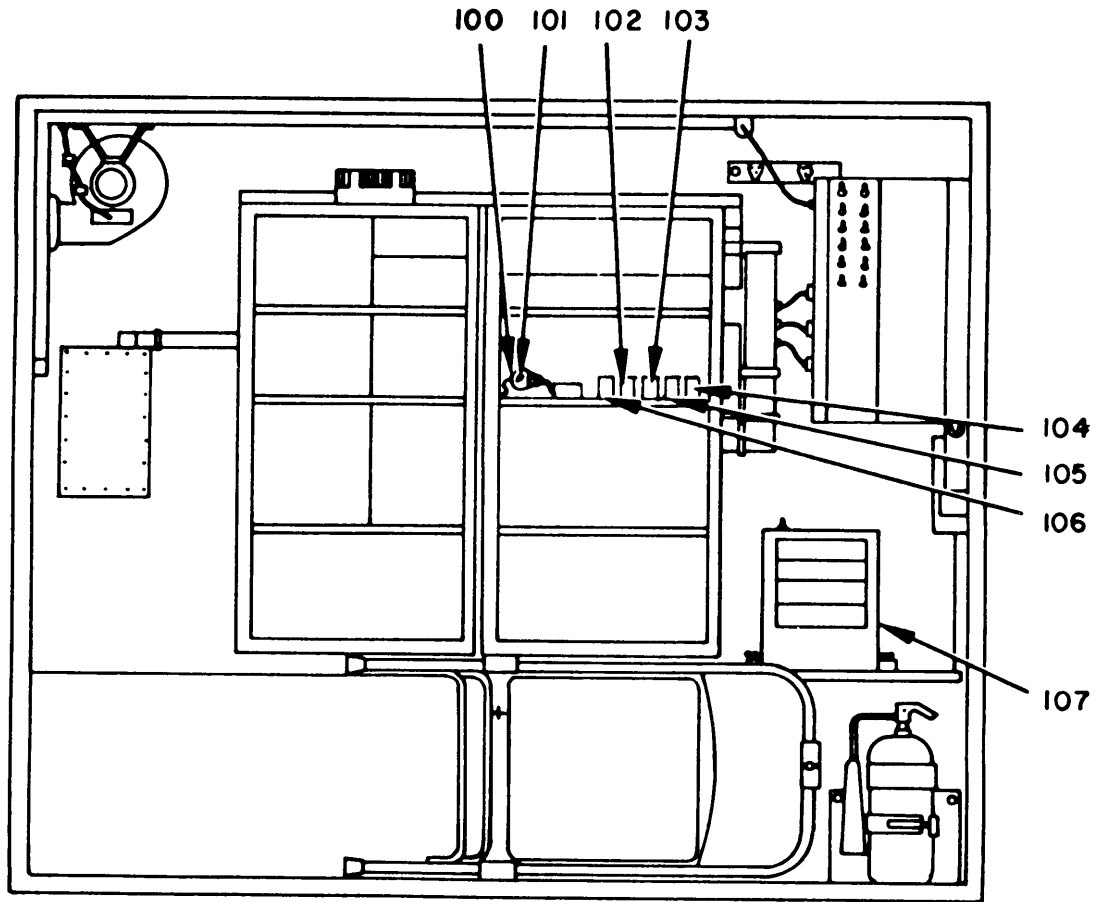


Figure 2. Shelter Facility S-390/TRC-145 (Sheet 2 of 6).



CURBSIDE WALL

ELITH004

Figure 2. Shelter Facility S-390/TRC-145 (Sheet 3 of 6).

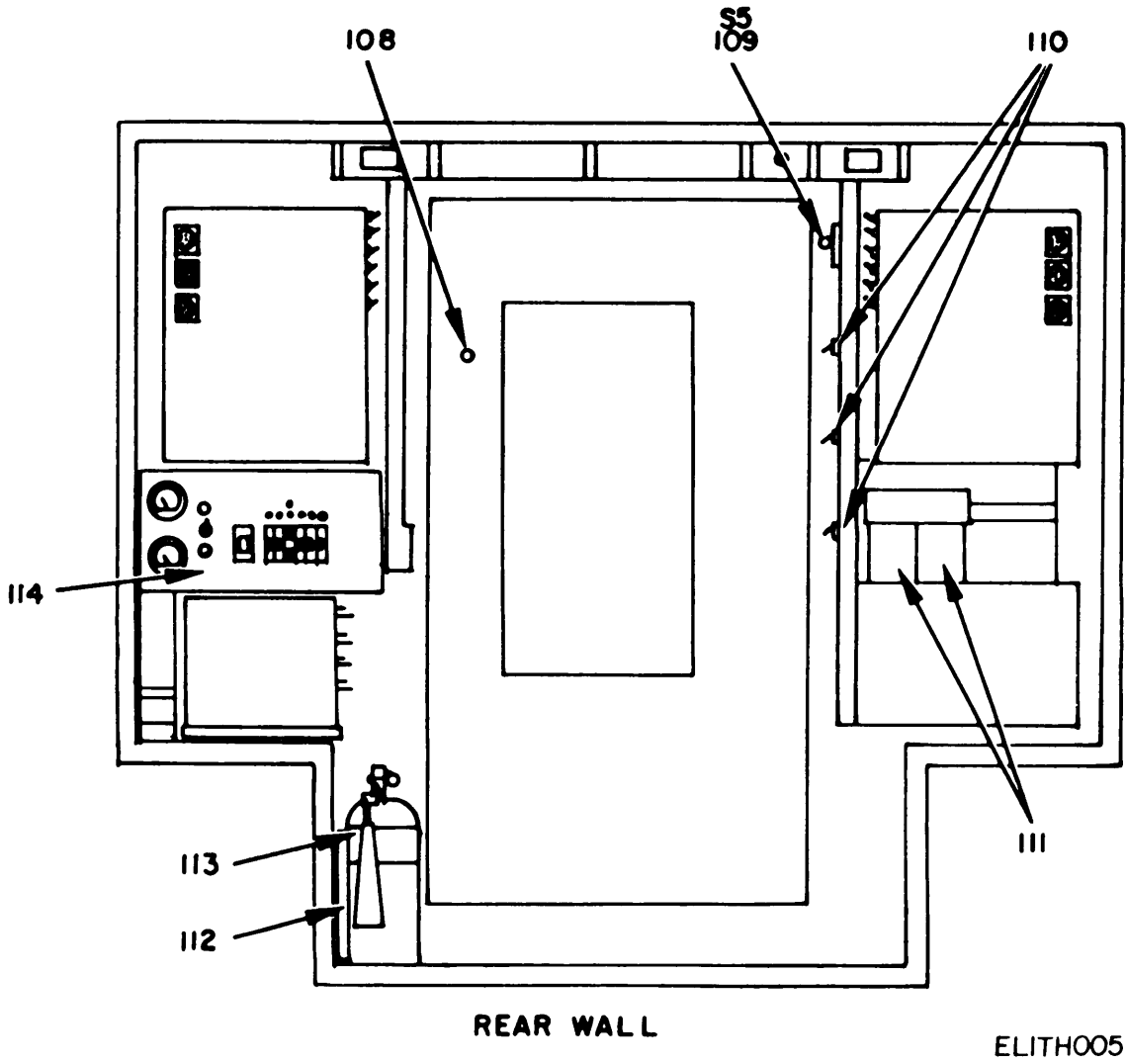


Figure 2. Shelter Facility S-390/TRC-145 (Sheet 4 of 6).

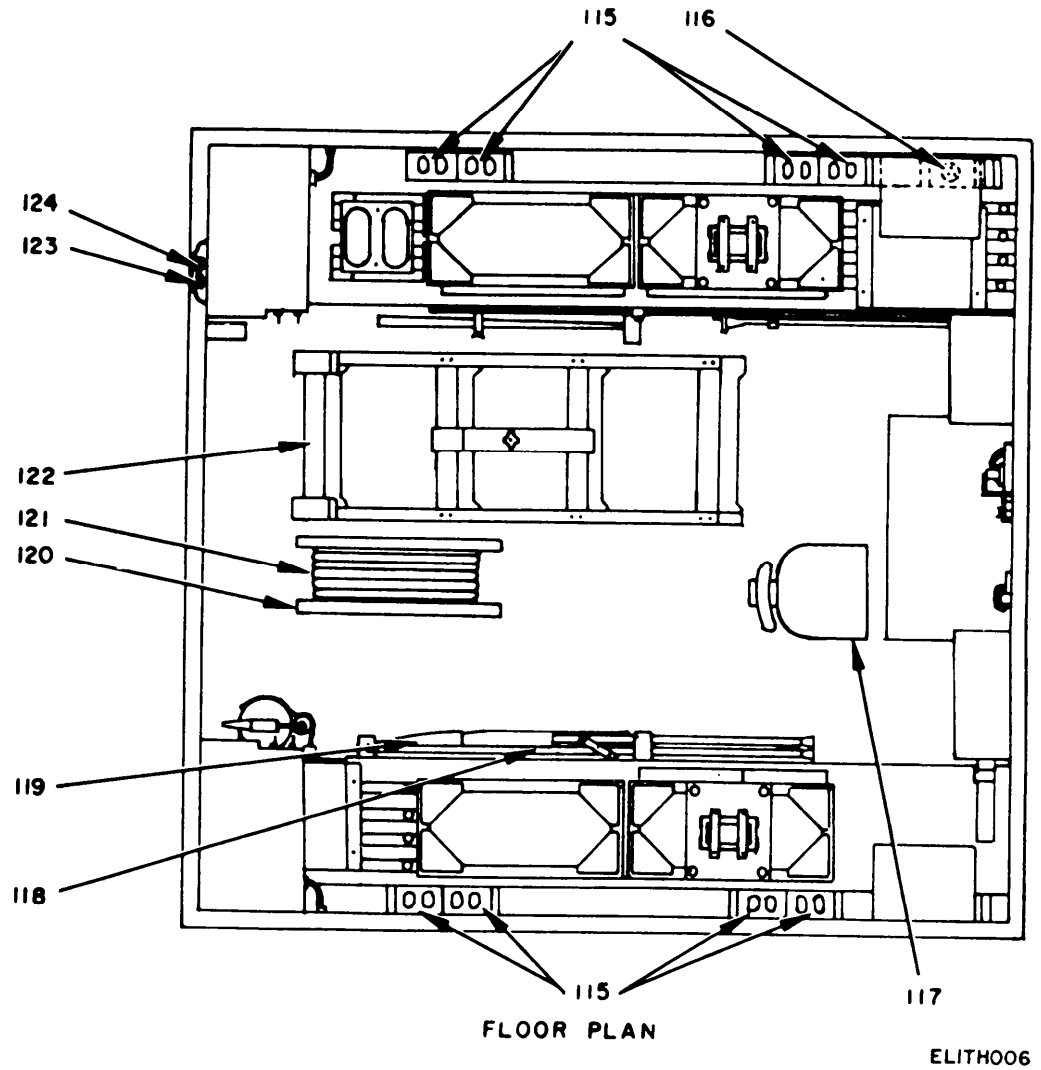
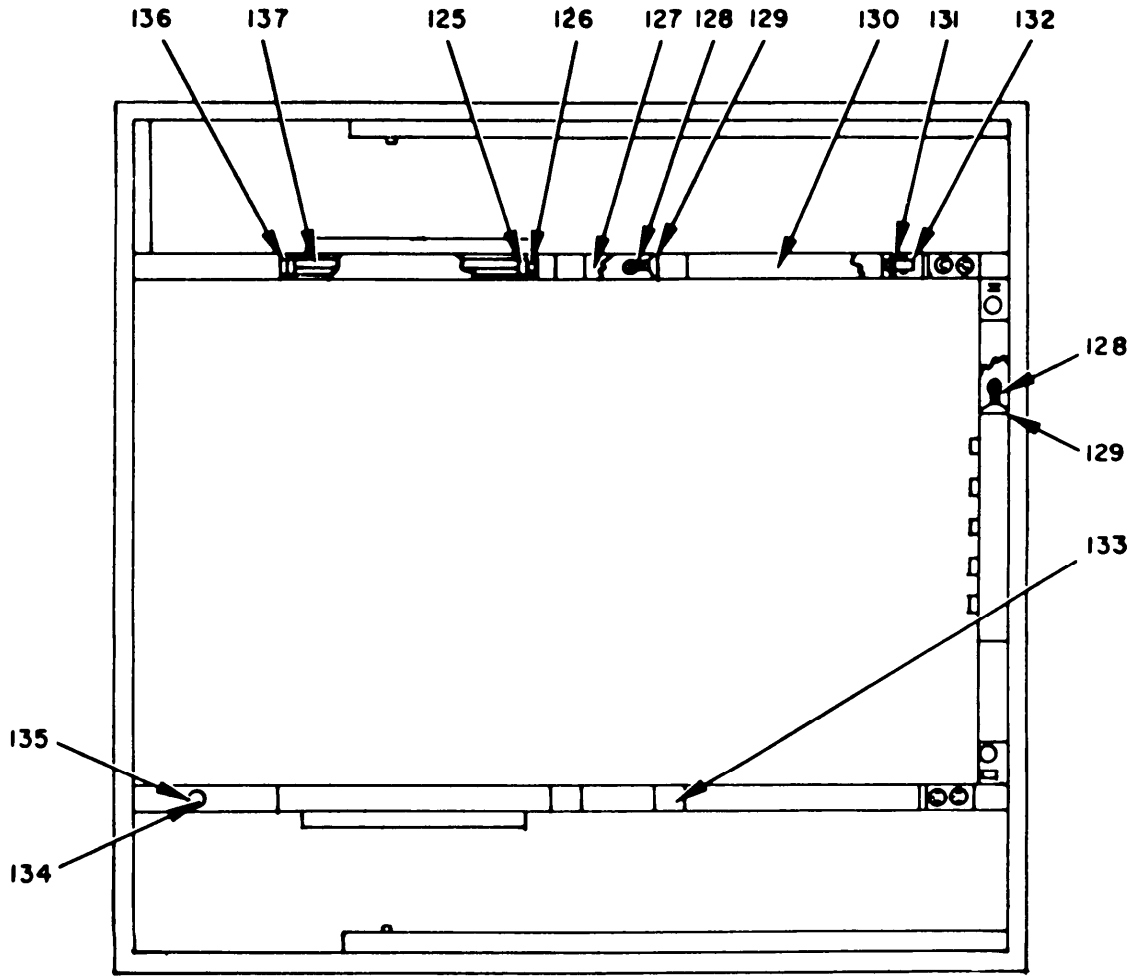


Figure 2. Shelter Facility S-390/TRC-145 (Sheet 5 of 6).



CEILING PLAN

ELITH007

Figure 2. Shelter Facility S-390/TRC-145 (Sheet 6 of 6).

SECTION II (1) ILLUSTRATION		(2)	(3)	(4)	(5)	(6)	(7)	(8)
FIG NO.	(a) ITEM NO.	SMR CODE	NATIONAL STOCK NUMBER	PART NUMBER	FSCM	DESCRIPTION	USABLE ON CODE	QTY INC IN UNIT
GROUP 05 SHFLTER FACILITY S-390/TRC-145								
2	1	PAOZZ	7910-00-900-1678	2800	29335	CLFANER,VACUUM	EA	1
2	2	PAOZZ	5975-00-224-5260	MX148G	80058	GROUND ROD	EA	2
2	3	PAOZZ	5110-00-115-5049	SCC539451	80063	AXE,SINGLE BIT	EA	1
2	4	PAOZZ	5120-00-900-6096	SCC539505	80063	HAMMER,HAND	EA	1
2	5	PAOZZ	5915-00-946-5369	JW17-1122	56289	FILTER,AUDIO	EA	4
2	6	PAOZZ		SCD627148	80063	CABLE ASSEMBLY,POWER ELECTRICAL	EA	2
2	7	PAOZZ	5920-00-930-2307	SCB547233	80063	ARRESTER,LIGHTNING	EA	4
2	6	PAOZZ	5930-00-892-9353	MS25308-232	96506	SWITCH,TOGGLF	EA	24
2	9	PAOZZ	5935-00-134-5266	U237BG	80058	CONNECTOR,PLUG,ELECTRICAL	EA	3
2	10	PAOZZ	6645-00-410-2395	SCC539475	80063	CLOCK, AIRCRAFT,MECHANICAL	EA	1
2	11	PAOZZ	5935-00-999-6934	5225	75582	SWITCH AND RECEPTACLE ASSEMBLY	EA	2
2	12	PAOZZ	6105-00-234-3504	SCD539825	80063	MOTOR,ALTERNATING,CURRENT	EA	2
2	13	PAOZZ	5805-00-342-4521	SCC539469	80063	BRUSH,DUSTING,BENCH	EA	1
2	14	PAOZZ	6230-00-729-9614	SCC539491	80063	LANTERN,ELECTRIC	EA	1
2	15	PAOZZ	6545-00-922-1200	SCD539483	80063	FIRST AID KIT,GENERAL PURPOSE	EA	1
2	16	PAOZZ	6605-00-264-3994	800090	33363	COMPASS,MAGNETIC	EA	1
2	17	PAOZZ	5120-00-234-8910	SCC539502-4	80063	SCREWDRIVER,FLAT TIP	EA	1
2	18	PAOZZ	5535-00-135-6163	10-37093-323	77820	ADAPTER,ELECTRICAL,CONNECTOR	EA	1
2	19	PAOZZ		G1519A128B1-25P	06324	ADAPTER,ELECTRICAL,CONNECTOR	EA	6
2	20	PAOZZ		CX7453AU	80058	CABLE ASSEMBLY,POWER,ELECTRICAL	EA	1
2	21	JPAOZZ	5995-00-133-9125	CX10734G	80058	CABLE ASSEMBLY,ACAPTOR	EA	2
2	22	PAOZZ		CX77C5AU	80058	CABLE ASSEMBLY,POWER,ELECTRICAL	EA	1
2	23	PAOZZ	5995-00-192-9607	SCD595511GP1	80063	CABLE ASSEMBLY,RADIO FREQUENCY	EA	5
2	24	PAOZZ	5995-00-192-9607	SCD595511GP2	80063	CABLE ASSEMBLY,RADIO FREQUENCY	EA	14
2	25	PAOZZ	5995-00-192-9605	SCD595511GP3	80063	CABLE ASSEMBLY,RADIO FREQUENCY	EA	22
2	26	PAOZZ		SCD595511GP4	80063	CABLE ASSEMBLY,SPECIAL PURPOSE	EA	2
2	27	PAOZZ		SCD627094GP1	80063	CABLE ASSEMBLY,SPECIAL PURPOSE	EA	4
2	28	PAOZZ		SCD627093GP1	80063	CABLE ASSEMBLY,SPECIAL PURPOSE	EA	2
2	29	PAOZZ		SCD627091GP1	80063	CABLE ASSEMBLY,SPECIAL PURPOSE	EA	2
2	30	PAOZZ		SCD627084GP1	80063	CABLE ASSEMBLY,SPECIAL PURPOSE	EA	2
2	31	PAOZZ	5995-00-736-0943	SCC343394GP1	80063	CABLE ASSEMBLY,AUDIO	EA	1
2	32	PAOZZ		SCD881112GP1	80063	CABLE ASSEMBLY,POWER,ELECTRICAL	EA	2
2	33	PAOZZ		SCD681112GP2	80063	CABLE ASSEMBLY,POWER,ELECTRICAL	EA	4
2	34	PAOZZ	5995-00-192-9608	SCD595511GP1	80063	CABLE ASSEMBLY,RADIO FREQUENCY	EA	10
2	35	PAOZZ	5995-00-192-9608	SCD595511GP2	80063	CABLE ASSEMBLY,RADIO FREQUENCY	EA	4
2	36	PAOZZ		SCD595511GP3	80063	CABLE ASSEMBLY,RADIO FREQUENCY	EA	3
2	37	PAOZZ		SCD595511GP4	80063	CABLE ASSEMBLY,RADIO FREQUENCY	EA	9
2	38	PAOZZ	5995-00-192-6399	SCD595511GP5	80063	CABLE ASSEMBLY,RADIO FREQUENCY	EA	13
2	39	PAOZZ	5995-00-195-0958	SCD595511GP6	80063	CABLE ASSEMBLY,RADIO FREQUENCY	EA	1
2	40	PAOZZ	5995-00-181-9545	SCD693658GP1	80063	CABLE ASSEMBLY,RADIO FREQUENCY	EA	1

SECTION II		(2)	(3)	(4)	(5)	(6)	(7)	(8)
(1)	(1)							
ILLUSTRATION			NATIONAL	PART		DESCRIPTION		QTY
(a)	(b)	SMR	STOCK	NUMBER	FSCM		USABLE ON CODE	INC
FIG	ITEM	CODE	NUMBER	NUMBER			U\M	IN
NO.	NO.							UNIT
2	41	PAOZZ	5995-00-181-5846	SC0653698GP2	80063	CABLE ASSEMBLY,RADIO FREQUENCY	EA	1
2	42	PAOZZ		SCD627081GP1	80063	CABLE ASSEMBLY,SPECIAL PURPOSE	EA	1
2	43	PAOZZ	5995-00-426-1098	SCD627081GP2	80063	CABLE ASSEMBLY,SPECIAL PURPOSE	EA	4
2	44	PAOZZ		SCD627083GP1	80063	CABLE ASSEMBLY,SPECIAL PURPOSE	EA	1
2	45	PAOZZ		SCD627081GP2	80063	CABLE ASSEMBLY,SPECIAL PURPOSE	EA	1
2	46	PAOZZ		SC0627094GP2	80063	CABLE ASSEMBLY,SPECIAL PURPOSE	EA	4
2	47	PAOZZ	5995-00-913-0471	SCD681007GP1	80063	CABLE ASSEMBLY,SPECIAL PURPOSE	EA	6
2	48	PAOZZ		SCD693662	80063	CABLE ASSEMBLY,TELEPHONE	EA	1
2	49	PAOZZ		SMD586160	80063	CABLE ASSEMBLY,SPECIAL PURPOSE	EA	1
2	50	PAOZZ	5995-00-428-6299	SMD693662	80063	CABLE ASSEMBLY,TELEPHONE	EA	1
2	51	PAOZZ	5999-00-136-9040	SCC388423	80063	CAP,ELECTRICAL CONNECTOR	EA	2
2	52	PAOZZ	5935-00-837-5966	UG710CU	80058	CONNECTOR,PLUG,ELECTRICAL	EA	2
2	53	PAOZZ	5935-00-836-6522	UG910CU	80058	CONNECTOR,PLUG,ELECTRICAL	EA	4
2	54	PAOZZ	5995-00-351-3107	SCD681007GP2	80063	CABLE ASSEMBLY,SPECIAL PURPOSE	EA	6
2	55	PAOZZ	5340-00-481-8934	MS90376-14V	96906	CAP,ELECTRICAL,CONNECTOR	EA	6
2	56	PAOZZ		CW282AU	80058	CAP,ELECTRICAL,CONNECTOR	EA	100
2	57	PAOZZ	5925-00-681-4952	MS25244-10	96906	CIRCUIT BREAKER	EA	1
2	58	PAOZZ		MS3515-1	96906	CONNECTOR,PLUG,ELECTRICAL	EA	2
2	59	PAOZZ	5935-00-484-5033	RTG6812-3S	09922	CONNECTOR,PLUG,ELECTRICAL	EA	6
2	60	PAOZZ	5935-00-405-9232	MS3116F12-8P	96906	CONNECTOR,PLUG,ELECTRICAL 2TL, 2TM, 5A2, 5A3, 5A4	EA	4
2	61	PAOZZ	5935-00-405-9232	MS3116F12-8P	96906	CONNECTOR,PLUG,ELECTRICAL 2TM	EA	8
2	62	PAOZZ	5935-00-403-7661	MS3116F12-8S	96906	CONNECTOR,PLUG,ELECTRICAL	EA	6
2	63	PAOZZ	5935-00-930-1210	1373A	91737	CONNECTOR,PLUG,ELECTRICAL	EA	10
2	64	PAOZZ	5935-00-758-5250	BJ79-2	14949	CONNECTOR,PLUG,ELECTRICAL	EA	4
2	65	PAOZZ	5935-00-813-4720	MS3114E14-19P	96906	CONNECTOR,PLUG,ELECTRICAL	EA	6
2	66	PAOZZ	5935-00-849-8278	MS35170-7600	96906	CONNECTOR,PLUG,ELECTRICAL	EA	4
2	67	PAOZZ	5935-00-957-0807	PT06W14-19S	77820	CONNECTOR,PLUG,ELECTRICAL	EA	24
2	68	PAOZZ		UG260FU	90058	CONNECTOR,PLUG,ELECTRICAL	EA	100
2	69	PAOZZ	5935-00-949-5244	13739	91737	CONNECTOR,PLUG,ELECTRICAL	EA	10
2	70	PAOZZ	5935-00-660-4302	UG573BU	80058	CONNECTOR,PLUG,ELECTRICAL	EA	2
2	71	PAOZZ	5935-00-931-7490	UP221M	80058	CONNECTOR,PLUG,ELECTRICAL	EA	12
2	72	PAOZZ	5935-00-592-0304	PT06810-SRPSR	77820	CONNECTOR,PLUG,ELECTRICAL	EA	2
2	73	PAOZZ	5935-00-902-8856	MS3116F8-3S	96906	CONNECTOR,PLUG,ELECTRICAL	EA	4
2	74	PAOZZ	5935-00-771-2282	MS3116F12-10P	96906	CONNECTOR,PLUG,ELECTRICAL	EA	4
2	75	PAOZZ	5935-00-702-1207	UG710BU	80058	CONNECTOR,PLUG,ELECTRICAL	EA	2
2	76	PAOZZ	5935-00-105-4641	PL75	14949	CONNECTOR,PLUG,ELECTRICAL	EA	4
2	77	PAOZZ	5935-00-933-3454	5361	74545	CONNECTOR,RECEPTACLE,ELECTRICAL	EA	2
2	78	PAOZZ	5935-00-259-3347	UG414AU	80058	CONNECTOR,RECEPTACLE,ELECTRICAL	EA	36
2	79	PAOZZ	5935-00-064-5560	UG1375U	80058	CONNECTOR,RECEPTACLE,ELECTRICAL	EA	2
2	80	PAOZZ	5935-00-449-7747	UG1837U	80058	CONNECTOR,RECEPTACLE,ELECTRICAL	EA	2

SECTION II (1) ILLUSTRATION		(2)	(3)	(4)	(5)	(6)	(7)	(8)	
FIG NO.	(a) ITEM NO.	SMR CODE	NATIONAL STOCK NUMBER	PART NUMBER	FSCM	DESCRIPTION	USABLE ON CODE	U\M	QTY INC IN UNIT
2	81	PAOZZ	5935-00-762-1495	MS3116F12-10S1	96906	CONNECTOR, RECEPTACLE, ELECTRICAL		EA	4
2	82	PAOZZ	5935-00-762-1495	MS3116F12-10S	96906	CONNECTOR, RECEPTACLE, ELECTRICAL		EA	2
2	83	PAOZZ	5935-00-577-8846	U1878G	80058	CONNECTOR, RECEPTACLE, ELECTRICAL		EA	2
2	84	PAOZZ	5935-00-992-0311	PT02E10-98S	77820	CONNECTOR, RECEPTACLE, ELECTRICAL		EA	2
2	85	PAOZZ	5935-00-004-5732	U2388G	80058	CONNECTOR, RECEPTACLE, ELECTRICAL		EA	2
2	86	PAOZZ	5975-00-947-3068	U3780FS	21873	COVER, ELECTRICAL, CONNECTOR		EA	1
2	87	PAOZZ	5820-00-987-9269	CW593U	81349	COVER, ELECTRICAL, CONNECTOR		EA	2
2	88	PAOZZ	5935-00-965-8146	10-37147-28	77820	COVER, ELECTRICAL, CONNECTOR		EA	1
2	89	PAOZZ	5935-00-813-4080	10-101960-103	12143	COVER, RECEPTACLE, ELECTRICAL		EA	1
2	90	PAOZZ	5935-00-477-1273	16532	91737	JACK, TELEPHONE		EA	8
2	91	PAOZZ	5930-00-865-6101	5521-1	03497	SWITCH, TOGGLE		EA	3
2	92	PAOZZ	9920-00-682-6757	AAA710	81349	ASHTRAY		EA	1
2	93	PAOZZ	5120-00-234-8913	SCC539894-4	80063	SCREWDRIVER, CROSSTIP		EA	1
2	94	PAOZZ	5120-00-234-8912	SCC539894-4	80063	SCREWDRIVER, CROSSTIP		EA	1
2	95	PAOZZ	7520-00-159-4863	SCD539454	80063	BASKFT, WASTE PAPER		EA	1
2	96	PAOZZ	5210-00-221-1882	GGGT1066	81349	TAPE, MEASURING		EA	1
2	97	PAOZZ	7520-00-162-6178	SCC539503	80063	SHARPENER, PENCIL		EA	1
2	98	PAOZZ	5935-00-947-2925	ESC194239GR2	80063	CONNECTOR, RECEPTACLE, ELECTRICAL		EA	1
2	99	PAOZZ		ESC194240GP2	80063	CONNECTOR, RECEPTACLE, ELECTRICAL		EA	1
2	100	PAOZZ	6230-00-115-2687	SCC539496	80063	LIGHT, EXTENSION		EA	1
2	101	PAOZZ		50WRS	02580	LAMP, INCANDESCENT		EA	1
2	102	PAOZZ	5120-00-946-5148	SCB539592	80063	GRIP, CABLE, WOVEN		EA	2
2	103	PAOZZ	5120-00-946-5114	SCB539593	80063	GRIP, CABLE, WOVEN		EA	1
2	104	PAOZZ	5120-00-293-2692	SCB539548	80063	EXTRACTOR, ELECTRON TUBE		EA	1
2	105	PAOZZ	5120-00-293-2696	SCB539547	80063	EXTRACTOR, ELECTRON TUBE		EA	1
2	106	PAOZZ	6150-00-495-1214	SCB539492	80063	LEAD, ELECTRICAL		EA	1
2	107	PAFZZ	4520-00-177-6198	P15C10	17032	HEATER		EA	2
2	108	PAOZZ	5340-00-930-1476	CB101	23404	VIEWER, DOOP		EA	1
2	109	PAOZZ	5930-00-202-0878	BZ2RWR22A2	91929	SWITCH, SENSITIVE		EA	1
2	110	PAOZZ	5930-00-827-0034	1201	74545	SWITCH, TOGGLE		EA	3
2	111	PAOZZ	5915-00-909-7762	SP289	81831	FILTER, RADIO FREQUENCY		EA	2
2	112	PAOZZ	4210-00-595-4085	SCC539468	80063	BRACKET, FIRE EXTINGUISHER		EA	1
2	113	PAOZZ	4210-00-270-4512	SCD539482	80063	EXTINGUISHER, FIRE		EA	1
2	114	XDODF		SCD693646	80063	POWER DISTRIBUTION PANEL		EA	1
2	115	PAOZZ	5935-00-283-4003	5262	74545	CONNECTOR, RECEPTACLE, ELECTRICAL		EA	8
2	116	PAOZZ	5935-00-350-1834	5261	74545	CONNECTOR, RECEPTACLE, ELECTRICAL		EA	1
2	117	PAOZZ	7110-00-273-8791	SCD539552	80063	CHAIR, ROTARY		EA	1
2	118	PAOZZ	7210-00-753-3043	SCC539526	80063	CUSHION, CHAIR		EA	1
2	119	PAOZZ	7105-00-269-8463	SCD539471	80063	CHAIR, FOLDING		EA	1
2	120	PAOZZ	8130-00-656-1090	RC435U	80058	REEL, CABLE		EA	1

(1) ILLUSTRATION (a) FIG NO.	(2) (b) ITEM NO.	(3) SMR CODE	(4) NATIONAL STOCK NUMBER	(5) PART NUMBER	(6) FSCM	TM11-5895-453-24P (6) DESCRIPTION USABLE ON CODE	(7) U\M	(8) QTY INC IN UNIT
2	121	PAOZZ	6145-00-752-2473	WT26U	80058	CABLE, POWER, ELECTRICAL	FT	115
2	122	PAOZZ	2540-00-846-8483	MX3543G	80063	LADDER, VEHICLE BOARDING	EA	1
2	123	PAOZZ	5970-00-869-6263	SCC76202-1	80063	CAP, ELECTRICAL	EA	108
2	124	PAOZZ	5940-00-283-5386	C106U	80058	PINDING POST	EA	108
2	125	PAOZZ	6250-00-227-0317	78X736	24455	LAMPHOLDER	EA	5
2	126	PAOZZ	6250-00-194-4794	SCB539504	80063	STARTER, FLUORESCENT LAMP	EA	5
2	127	PAOZZ	6210-00-451-8350	SCC539466-1	80063	SHIELD, LAMP, INCANDESCENT	EA	2
2	128	PAOZZ	6240-00-155-8653	25T8DC	99407	LAMP, INCANDESCENT	EA	4
2	129	PAOZZ	6250-00-995-9074	12-240	72619	LAMPHOLDER	EA	4
2	130	PAOZZ	6210-00-921-6682	SCC539466	80063	SHIELD, LAMP, FLUORESCENT	EA	5
2	131	PAOZZ	5910-00-142-4515	532943	56289	CAPACITOR, PAPER DIFLECTRIC	EA	2
2	132	PAOZZ	6250-00-804-3449	89G457D	99407	BALLAST, LAMP	EA	5
2	133	PAOZZ	5915-00-116-8916	591B	07777	FILTER, RADIO INTERFERENCE	EA	5
2	134	PAOZZ	6240-00-635-9753	NE34	24455	LAMP, GLOW	EA	1
2	135	PAOZZ	6250-00-299-6562	4109	74545	LAMPHOLDER	EA	1
2	136	PAOZZ	6250-00-158-8900	MILLI9037	81349	LAMPHOLDER	EA	5
2	137	PAOZZ	6240-00-152-2996	SCC539495	80063	LAMP, FLUORESCENT	EA	5
N 2	138	PAFDD	5920-01-093-6969	SC-D-956112	80063	ARRESTOR, ELECTRICAL SURGE F-1483/G	EA	2

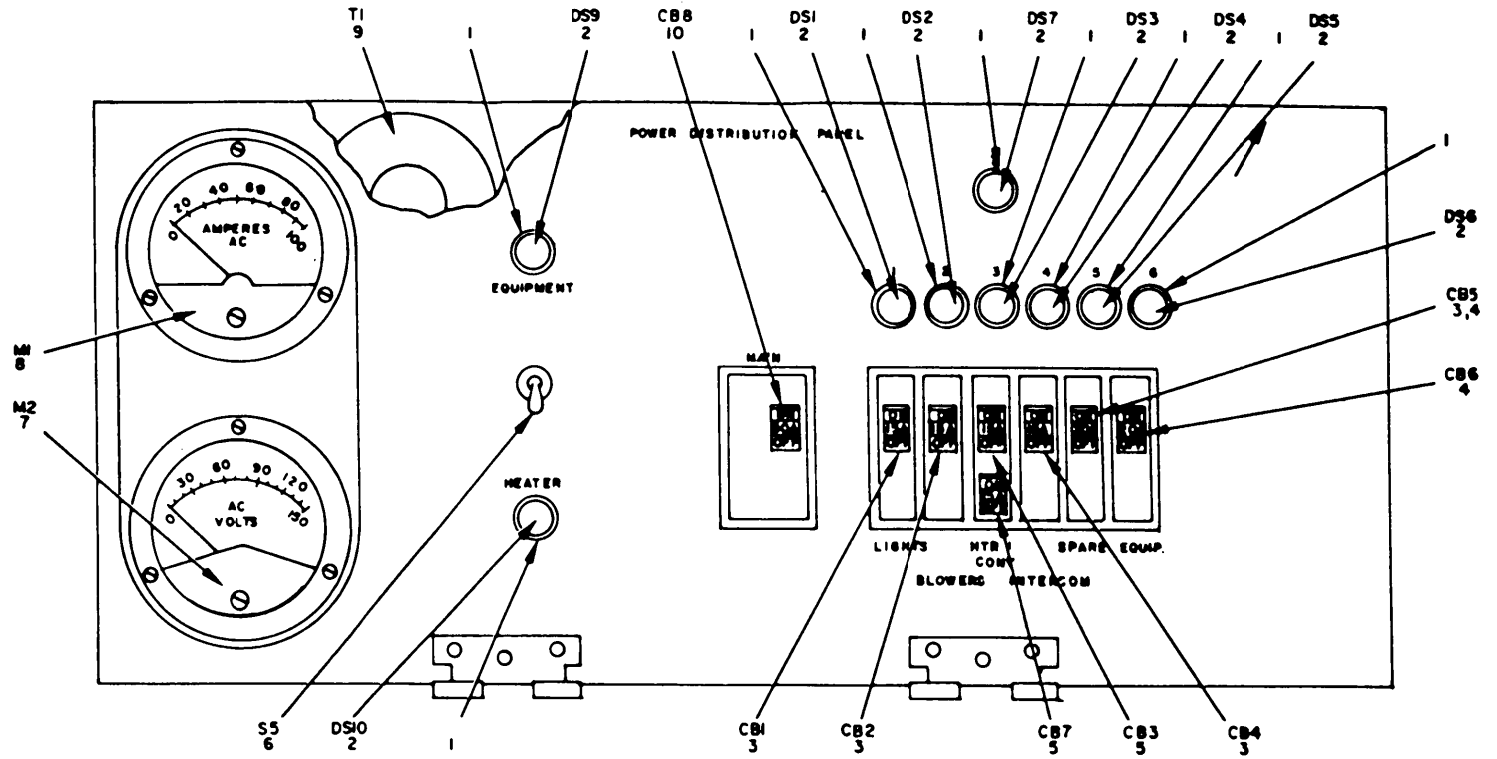
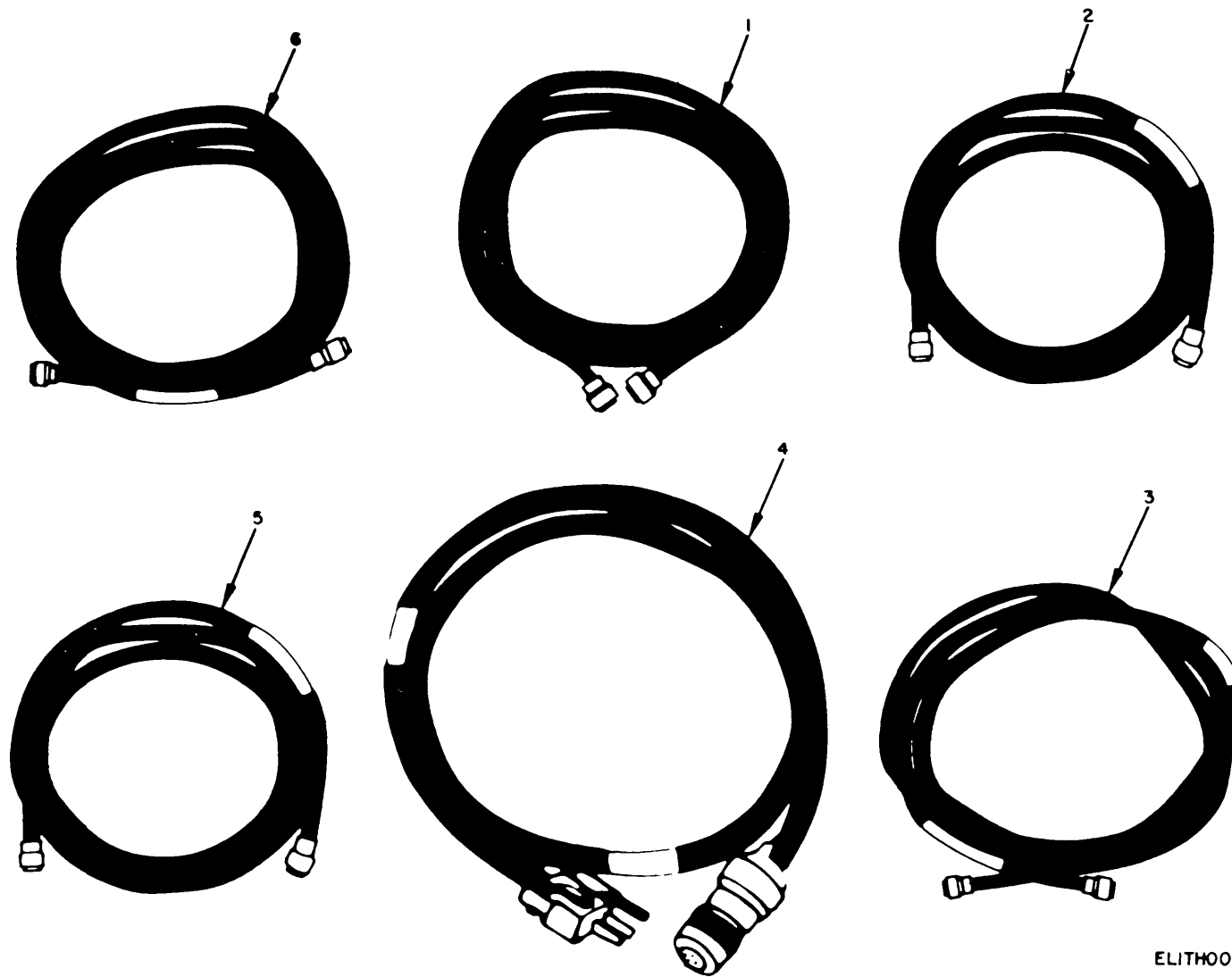


Figure 3. Power Distribution Panel.

ELITH008

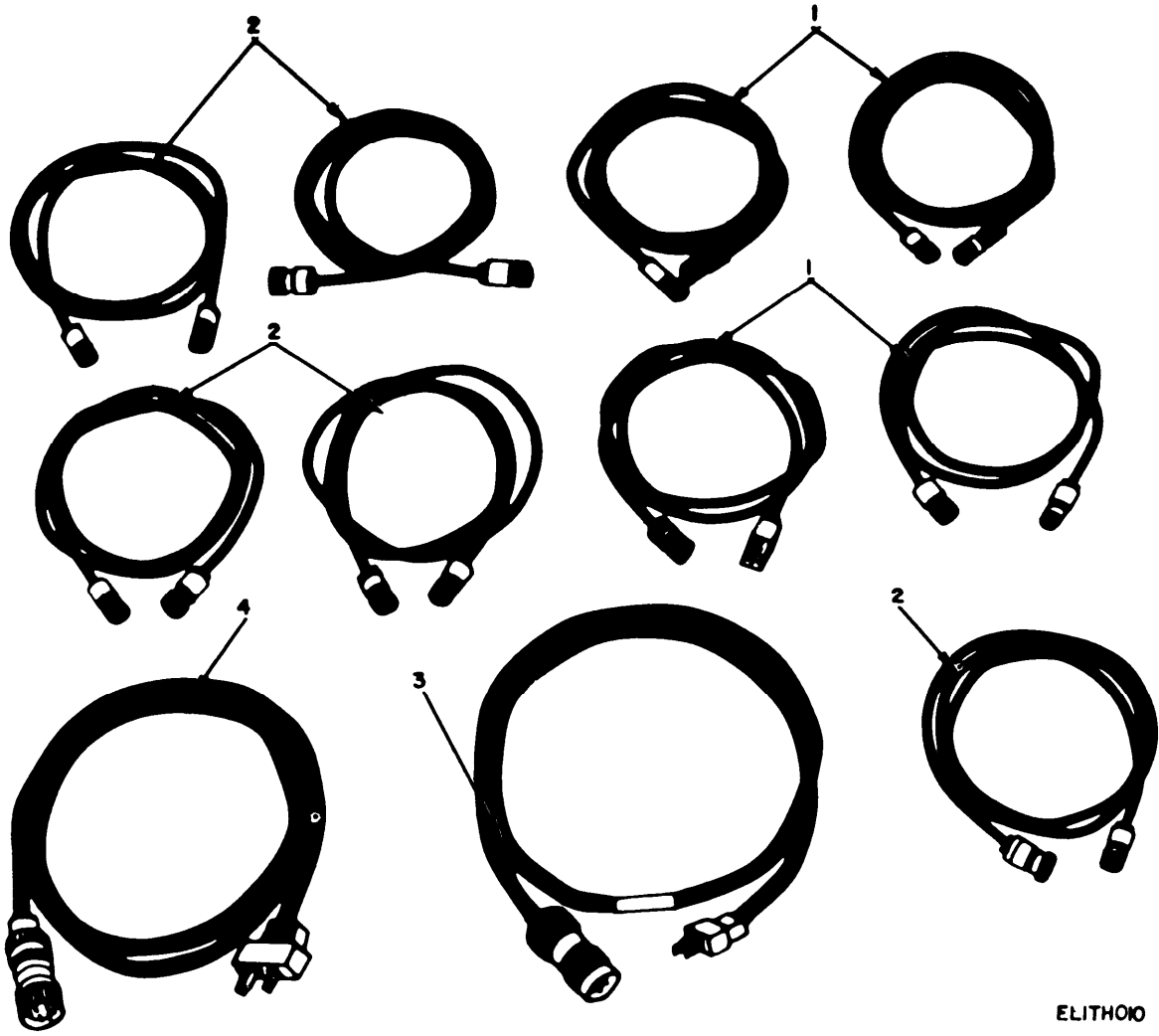
(1) ILLUSTRATION (a) FIG NO.	(b) ITEM NO.	(2) SMR CODE	(3) NATIONAL STOCK NUMBER	(4) PART NUMBER	(5) FSCM	TM11-5895-453-24P (6) DESCRIPTION USABLE ON CODE	(7) U\M	(8) QTY INC IN UNIT
GROUP 0503 POWER DISTRIBUTION PANEL								
3	1	PAOZZ	6210-00-087-4248	37-0408-0331-245	72619	LAMPHOLDER	EA	9
3	2	PAOZZ	6240-00-223-9100	NE51	24455	LAMP,GLOW	EA	9
3	3	PAOZZ	5925-00-818-4811	QO-115	04809	CIRCUIT BREAKER 2TL, 2TM, 582, 583, 584	EA	3
3	3	PAOZZ	5925-00-818-4811	QO-115	04809	CIRCUIT BREAKER 2TM	EA	4
3	4	PAOZZ	5925-00-583-7941	QO-120	04809	CIRCUIT BREAKER 2TL, 2TM, 5A2, 5A3, 5A4	EA	2
3	4	PAOZZ	5925-00-583-7941	QO-120	04809	CIRCUIT BREAKER 2TM	EA	1
3	5	PAOZZ	5925-00-815-6657	QO-1515	04809	CIRCUIT BREAKER 2TL, 2TM, 5A2, 5A3, 5A4	EA	1
3	5	PAOZZ	5925-00-011-2540	QO-2020	04809	CIRCUIT BREAKER 2TM	EA	1
3	6	PAOZZ	5930-00-543-8394	MS25103-23	96906	SWITCH, TOGGLE	EA	1
3	7	PAOZZ	6625-00-669-5019	MR36W150ACVVP	81349	VOLTMETER	EA	1
3	8	PAOZZ	6625-00-854-6787	MR36W100ACCAR	81349	AMMETER	EA	1
3	9	PAOZZ	5950-00-892-8208	3CT11B	53559	TRANSFORMER, CURRENT	EA	1
3	10	PAOZZ	5925-00-703-6084	QO-250	04809	CIRCUIT BREAKER	EA	1



ELITH009

Figure 4. Loopback Kit

(1) ILLUSTRATION (a) FIG NO.	(2) (b) ITEM NO.	(3) SMR CODE	(4) NATIONAL STOCK NUMBER	(5) PART NUMBER	(6) FSCM	TM11-5895-453-24P DESCRIPTION USABLE ON CODE	(7) U\M	(8) QTY INC IN UNIT
						GROUP 0401 LOOPBACK KIT		
4	1	PAOZZ		SCD595511GR87	80063	CABLE ASSEMBLY,RADIO FREQUENCY	EA	1
4	2	PAOZZ	5995-00-195-0958	SCD595511GR88	80063	CABLE ASSEMBLY,RADIO FREQUENCY	EA	1
4	3	PAOZZ	5995-00-181-9545	SCD693658GP9	80063	CABLE ASSEMBLY,RADIO FREQUENCY	EA	1
4	4	PAOZZ	5995-00-177-4555	SCD681112G82	80063	CABLE ASSEMBLY,SHIELDED,POWER	EA	1
4	5	PAOZZ	5995-00-181-9545	SCD693658GR10	80063	CABLE ASSEMBLY,RADIO FREQUENCY	EA	1
4	6	PAOZZ		SCD595511GR86	80063	CABLE ASSEMBLY,RADIO FREQUENCY	EA	1



ELITHOIO

Figure 5. Installation Kit.

(1) ILLUSTRATION (a) FIG NO.	(2) (b) ITEM NO.	(3) SMR CODE	(3) NATIONAL STOCK NUMBER	(4) PART NUMBER	(5) FSCM	TM11-5895-543-24P (6) DESCRIPTION	USABLE ON CODE	(7) U\M	(8) QTY INC IN UNIT
						GROUP 0902 INSTALLATION KIT			
5	1	PAOZZ	5995-00-177-4667	CG3419U	80058	CABLE ASSEMBLY,VIDEO		EA	1
5	2	PAOZZ	5995-00-177-4675	CG3473U	80058	CABLE ASSEMBLY,RADIO FREQUENCY		EA	5
5	3	PAOZZ	5995-00-177-4665	CX10764G	80058	CABLE ASSEMBLY,SHIELDED POWER		EA	1
5	4	PAOZZ		CX11727G	80058	CABLE ASSEMBLY,POWER,ELECTRICAL		EA	1

NATIONAL STOCK NUMBER AND PART NUMBER INDEX

NOTE: LATEST NATIONAL STOCK NUMBER ASSIGNMENTS ARE INCLUDED AT END OF INDEX

STOCK NUMBER	FIGURE NO.	ITEM NO.	STOCK NUMBER	FIGURE NO.	ITEM NO.
5925-00-011-2540	3	5	5935-00-477-1273	2	90
5935-00-064-5560	2	79	5340-00-481-8934	2	55
5935-00-064-5732	2	85	5935-00-484-5033	2	59
5805-00-069-8795	1	7	6150-00-495-1214	2	106
6210-00-087-4248	3	1	5805-00-543-0012	1	3
5935-00-105-4641	2	76	5930-00-543-8394	3	6
6230-00-115-2687	2	100	5935-00-577-8846	2	83
5110-00-115-5049	2	3	5925-00-583-7941	3	4
5915-00-116-8916	2	133	5925-00-583-7941	3	4
5410-00-130-5806	1	5	4210-00-595-4085	2	112
5995-00-133-9125	2	21	6240-00-635-9753	2	134
5935-00-134-5266	2	9	8130-00-656-1090	2	120
5935-00-135-6163	2	18	5935-00-660-4302	2	70
5999-00-136-9040	2	51	6625-00-669-5019	3	7
5910-00-142-4515	2	131	5925-00-681-4952	2	57
6240-00-152-2996	2	137	9920-00-682-6757	2	92
6240-00-155-8653	2	128	5925-00-703-6084	3	10
6250-00-158-8900	2	136	6230-00-729-9614	2	14
7520-00-159-4863	2	95	5995-00-736-0943	2	31
7520-00-162-6178	2	97	6145-00-752-2473	2	121
5995-00-177-4555	4	4	5830-00-752-5357	1	4
			7210-00-753-3043	2	118
5995-00-177-4665	5	3	5935-00-758-5250	2	64
5995-00-177-4667	5	1	5935-00-762-1495	2	81
5995-00-177-4675	5	2	5935-00-762-1495	2	82
4520-00-177-6198	2	107	5935-00-771-2262	2	74
5995-00-181-9545	2	40	6250-00-804-3449	2	132
5995-00-181-9545	4	3	5935-00-813-4080	2	89
5995-00-181-9545	4	5	5935-00-813-4720	2	65
5995-00-181-9546	2	41	5925-00-815-6657	3	5
			5925-00-818-4811	3	3
			5925-00-818-4811	3	3
5995-00-192-9605	2	25	5930-00-827-0034	2	110
5995-00-192-9607	2	23	5935-00-836-6522	2	53
5995-00-192-9607	2	24	5935-00-837-5966	2	52
5995-00-192-9608	2	34	2540-00-846-8483	2	122
5995-00-192-9608	2	35	5935-00-849-8278	2	66
6250-00-194-4794	2	126	6625-00-854-6787	3	8
5995-00-195-0958	2	39	5930-00-865-6101	2	91
			5820-00-868-8137	1	6
			5970-00-869-6263	2	123
5995-00-197-6399	2	38	5950-00-892-8208	3	9
5930-00-202-0878	2	109	5930-00-892-9393	2	8
5210-00-221-1882	2	96	7910-00-900-1678	2	1
6240-00-223-9100	3	2	5120-00-900-6096	2	4
5975-00-224-5260	2	2	5805-00-900-8200	1	2
6250-00-227-0317	2	125	5935-00-902-8856	2	73
6105-00-234-3504	2	12	5915-00-909-7762	2	111
5120-00-234-8910	2	17	5995-00-913-0471	2	47
5120-00-234-8912	2	94	6210-00-921-6682	2	130
5120-00-234-8913	2	93	6545-00-922-1200	2	15
5935-00-259-3347	2	78	5820-00-928-3382	1	8
6605-00-264-3994	2	16	5935-00-930-1210	2	63
7105-00-269-8463	2	119	5340-00-930-1476	2	108
4210-00-270-4512	2	113	5920-00-930-2307	2	7
7110-00-273-8791	2	117	5820-00-930-8078	1	2
5935-00-283-4003	5	115	5820-00-930-8079	1	8
5940-00-283-5386	2	124	5935-00-931-7490	2	71
5120-00-293-2692	2	104	5935-00-933-3454	2	77
5120-00-293-2696	2	105	5120-00-946-5114	2	103
6250-00-299-6562	2	135	5120-00-946-5148	2	102
5805-00-342-4521	2	13	5915-00-946-5369	2	5
5935-00-350-1834	2	116	5935-00-947-2925	2	98
5995-00-351-3107	2	54	5975-00-947-3068	2	86
5935-00-403-7661	2	62	5935-00-949-5244	2	69
5935-00-405-9232	2	60	5935-00-957-0807	2	67
5935-00-405-9232	2	61	5935-00-965-8146	2	88
6645-00-410-2395	2	10	5820-00-987-9269	2	87
5995-00-426-1098	2	43	5935-00-992-0304	2	72
5995-00-428-6299	2	50	5935-00-992-0311	2	84
5935-00-449-7747	2	80	6250-00-995-9074	2	129
6210-00-451-8350	2	127	5935-00-999-6934	2	11

PART NUMBER	FIG. NO.	ITEM NO.	PART NUMBER	FIG. NO.	ITEM NO.	
AAA710	81349	2	BTG6B12-35	09922	2	59
ANGRC103V	80058	1	BZ2RW822A2	91929	2	109
BJ79-2	14949	2	CB101	23404	2	108

NATIONAL STOCK NUMBER AND PART NUMBER INDEX

PART NUMBER	FSCM	FIG. NO.	ITEM NO.	PART NUMBER	FSCM	FIG. NO.	ITEM NO.
CG3419U	80058	5	1	SCD539825	80063	2	12
CG3473U	80058	5	2	SCD595511GP1	80063	2	23
CV1548G	80058	1	7	SCD595511GP1	80063	2	34
CW282AU	80058	2	56	SCD595511GP2	80063	2	24
CW593U	81349	2	87	SCD595511GP2	80043	2	35
CX10734G	80058	2	21	SCD595511GP3	80063	2	25
CX10764G	80058	5	3	SCD595511GP3	80063	2	36
CX11727G	80058	5	4	SCD595511GP4	80063	2	26
CX7453AU	80058	2	20	SCD595511GP4	80063	2	37
CX7705AU	80058	2	22	SCD595511GP5	80063	2	38
ESCL94239GR2	80063	2	98	SCD595511GP6	80063	2	39
ESCL94240GR2	80063	2	99	SCD595511GR86	80063	4	6
GGGT1066	81349	2	96				
G1519A12881-25P	06324	2	19	SCD595511GR87	80063	4	1
JW17-1122	56289	2	5				
LS147CFI	80058	1	4	SCD595511GR88	80063	4	2
MILLI9037	81349	5	136				
MR36W100ACCAR	81349	3	8	SCD627081GP1	80063	2	42
MR36W150ACVVR	81349	3	7	SCD627081GP2	80063	2	43
MS25103-23	96906	3	6	SCD627083GP1	80063	2	44
MS25244-10	96906	2	57	SCD627084GP1	80063	2	30
MS25308-232	96906	2	8	SCD627091GP1	80063	2	29
MS3114E14-19P	96906	2	65	SCD627091GP2	80063	2	45
MS3116F12-10P	96906	2	74	SCD627093GP1	80063	2	28
MS3116F12-10S	96906	2	82	SCD627094GP1	80063	2	27
MS3116F12-10S1	96906	2	81	SCD627094GP2	80063	2	46
MS3116F12-8P	96906	2	60	SCD627148	80063	2	6
MS3116F12-8P	96906	2	61	SCD681007GP1	80063	2	47
MS3116F12-8S	96906	2	62	SCD681007GP2	80063	2	54
MS3116F8-3S	96906	2	73	SCD681112GP1	80063	2	32
MS3515-1	96906	2	58	SCD681112GP2	80063	2	33
MS35170-2600	96906	2	66	SCD681112GR2	80063	4	4
MS90376-14Y	96906	2	55				
MX148G	80058	2	2	SCD693646	80063	2	114
MX3543G	80063	2	122	SCD693658GP1	80063	2	40
NE34	24455	2	134	SCD693658GP2	80063	2	41
NE51	24455	3	2	SCD693658GR10	80063	4	5
PL75	14949	2	76				
PT02E10-98S	77820	2	84	SCD693658GR9	80063	4	3
PT06E10-98PSR	77820	2	72				
PT06W14-19S	77820	2	67	SCD693662	80063	2	48
P15C10	17032	2	107	SMD586160	80063	2	49
QO-115	04809	3	3	SMD693662	80063	2	50
QO-115	04809	3	3	SP289	81831	2	111
QO-120	04809	3	4	S32943	56289	2	131
QO-120	04809	3	4	S380ATRC145	80058	1	5
QO-1515	04809	3	5	S390ATRC145	80058	1	5
QO-2020	04809	3	5	S390TRC145	80058	1	5
QO-250	04809	3	10	TA312PT	80058	1	3
RC435U	80058	2	120	TD204U	80058	1	2
SCB539492	80063	2	106	TD660AG	80058	1	8
SCB539504	80063	2	126	TD660G	80058	1	8
SCB539547	80063	2	105	TD754G	80058	1	2
SCB539548	80063	2	104	TSECKG27	80058	1	1
SCB539592	80063	2	102	UG1375U	80058	2	79
SCB539593	80063	2	103	UG1837U	80058	2	80
SCB547233	80063	2	7	UG260EU	80058	2	68
SCC343394GP1	80063	2	31	UG414AU	80058	2	78
SCC388423	80063	2	51	UG573BU	80058	2	70
SCC539451	80063	2	3	UG710BU	80058	2	75
SCC539466	80063	2	130	UG710CU	80058	2	52
SCC539466-1	80063	2	127	UG910CU	80058	2	53
SCC539468	80063	2	112	UP221M	80058	2	711
SCC539469	80063	2	13	U106U	80058	2	124
SCC539475	80063	2	10	U187BG	80058	2	83
SCC539491	80063	2	14	U237BG	80058	2	9
SCC539495	80063	2	137	U238BG	80058	2	85
SCC539496	80063	2	100	U3780FS	21873	2	86
SCC539502-4	80063	2	17	WT26U	80058	2	121
SCC539503	80063	2	97	10-101960-103	12143	2	89
SCC539505	80063	2	4	10-37093-323	77820	2	18
SCC539526	80063	2	118	10-37147-28	77820	2	88
SCC539894-3	80063	2	93	12-240	72619	2	129
SCC539894-4	80063	2	91	1201	74545	5	110
SCC76202-1	80063	2	123	13738	91737	2	63
SCD539454	80063	2	95	13739	91737	2	69
SCD539471	80063	2	119	16532	91737	2	90
SCD539482	80063	2	113	25T8DC	99407	2	128
SCD539483	80063	2	15	2800	29335	2	1
SCD539552	80063	2	117	3CT11B	93993	3	9

NATIONAL STOCK NUMBER AND PART NUMBER INDEX

PART NUMBER	FSCM	FIG. NO.	ITEM NO.	PART NUMBER	FSCM	FIG. NO.	ITEM NO.
37-0408-0331-245	72619	3	1	5361	74545	2	77
4109	74545	2	135	5521-1	03497	2	91
50WRS	02580	2	101	5918	07777	2	133
5225	75582	2	11	78X736	24455	2	125
5261	74545	2	116	800090	33363	2	16
5262	74545	2	115	89G457D	99407	2	132

LATEST NATIONAL STOCK NUMBER ASSIGNMENTS

STOCK NUMBER	FIGURE NO.	ITEM NO.
5995-00-195-0958	4	2
5935-00-702-1207	2	75

LATEST PART NUMBER ASSIGNMENT

PART NUMBER	FSCM	FIG. NO.	ITEM NO.
SC-D-956112	80063	2	138

ADDITIONAL LATEST NATIONAL STOCK NUMBER ASSIGNMENT

STOCK NUMBER	FIGURE NO.	ITEM NO.
5920-01-093-6969	2	138

By Order of the Secretary of the Army:

FRED C. WEYAND
General, United States Army
Chief of Staff

Official:

PAUL T. SMITH
Major General, United States Army
The Adjutant General

DISTRIBUTION:

Active Army
 USASA (2)
 COE (1)
 TSG (1)
 USAARENBD (1)
 DARCOM (1)
 TRADOC (2)
 ARADCOM (2)
 ARADCOM Rgn (2)
 OS Maj Cored (4)
 LOGCOMDS (3)
 MICOM (2)
 TECOM (2)
 IJSACC (4)
 MDW (1)
 Armies (2)
 Corps)2)
 HISA (Ft Monmouth) (33)
 Svc Colleges (1)
 USASESS (10)
 USAADS (2)
 USAFAS (2)
 USAARMS (2)
 USAIS (2)
 USAES (2)
 USAINTCS (3)
 MAAG (1)
 USARMIS (1)
 Sig FLDMS (1)
 USAERDAA (1)
 USAERDAW (1)

Instl (2) except
 Fort Gordon (10)
 Fort Huachuca (10)
 Fort Carson (5)
 Ft Richardson (ECOM) (2)
 LBAD (14)
 SAA13 (30)
 TOAD (14)
 SHAD (3)
 Ft Gillem (10)
 Units org under the fol TOE: (1 cy)
 7
 11-35
 11-37
 11-85
 11-97
 11-98
 11-237
 11-302
 11-327
 11-347
 11-500(AA-AC)
 17
 29-134
 29-136
 37
 44-235
 44-236
 44-535
 44-536

NG: None

USAR: None

For explanation of abbreviations used, see AR 310-50.

RECOMMENDED CHANGES TO EQUIPMENT TECHNICAL MANUALS



SOMETHING WRONG WITH THIS MANUAL?

THEN... JOT DOWN THE DOPE ABOUT IT ON THIS FORM, TEAR IT OUT, FOLD IT AND DROP IT IN THE MAIL!

FROM: (YOUR UNIT'S COMPLETE ADDRESS)

Commander
Stateside Army Depot
ATTN: AMSTA-US
Stateside, N.J. 07703

DATE 10 July 1975

PUBLICATION NUMBER

TM 11-5840-340-12

DATE

23 Jan 74

TITLE

Radar Set AN/PSC-76

BE EXACT... PIN-POINT WHERE IT IS

PAGE NO.	PARA-GRAPH	FIGURE NO.	TABLE NO.
----------	------------	------------	-----------

2-25	2-28		
3-10	3-3		
5-6	5-8		

FO3

IN THIS SPACE TELL WHAT IS WRONG AND WHAT SHOULD BE DONE ABOUT IT:

Recommend that the installation antenna alignment procedure be changed throughout to specify a 2° IFF antenna lag rather than 1°.

REASON: Experience has shown that with only a 1° lag, the antenna servo system is too sensitive to wind gusting in excess of 25 knots, and has a tendency to rapidly accelerate and decelerate as it hunts, causing strain to the drive train. Hunting is minimized by adjusting the lag to 2° without degradation of operation.

3-1

Item 5, Function column. Change "2 db" to "3db."

REASON: The adjustment procedure for the TRANS POWER FAULT indicator calls for a 3 db (500 watts) adjustment to light the TRANS POWER FAULT indicator.

Add new step f.1 to read, "Replace cover plate removed in step e.1, above."

REASON: To replace the cover plate.

Zone C 3. On J1-2, change "+24 VDC to "+5 VDC."

REASON: This is the output line of the 5 VDC power supply. + 24 VDC is the input voltage.

TYPED NAME, GRADE OR TITLE, AND TELEPHONE NUMBER

SSG I. M. DeSpirito 999-1776

SIGN HERE:

SSG I. M. DeSpirito

DA FORM 2028-2 (TEST) 1 AUG 74

P.S.—IF YOUR UNIT WANTS TO KNOW ABOUT YOUR MANUAL "FIND," MAKE A CARBON COPY OF THIS AND GIVE IT TO YOUR HEADQUARTERS.

HISA 1686-75

TEAR ALONG DOTTED LINE

FILL IN YOUR
UNIT'S ADDRESS

DEPARTMENT OF THE ARMY

OFFICIAL BUSINESS
PENALTY FOR PRIVATE USE \$300

FOLD BACK

POSTAGE AND FEES PAID
DEPARTMENT OF THE ARMY
DOD 314



Commander
US Army Electronics Command
ATTN: DRSEL-MA-Q
Fort Monmouth, New Jersey 07703

CUT ALONG DOTTED LINE

FOLD BACK

THE METRIC SYSTEM AND EQUIVALENTS

WEIGHT MEASURE

1 Centimeter = 10 Millimeters = 0.01 Meters = 0.3937 Inches
 1 Meter = 100 Centimeters = 1000 Millimeters = 39.37 Inches
 1 Kilometer = 1000 Meters = 0.621 Miles

WEIGHTS

1 Gram = 0.001 Kilograms = 1000 Milligrams = 0.035 Ounces
 1 Kilogram = 1000 Grams = 2.2 lb.
 1 Metric Ton = 1000 Kilograms = 1 Megagram = 1.1 Short Tons

LIQUID MEASURE

1 Milliliter = 0.001 Liters = 0.0338 Fluid Ounces
 1 Liter = 1000 Milliliters = 33.82 Fluid Ounces

SQUARE MEASURE

1 Sq. Centimeter = 100 Sq. Millimeters = 0.155 Sq. Inches
 1 Sq. Meter = 10,000 Sq. Centimeters = 10.76 Sq. Feet
 1 Sq. Kilometer = 1,000,000 Sq. Meters = 0.386 Sq. Miles

CUBIC MEASURE

1 Cu. Centimeter = 1000 Cu. Millimeters = 0.06 Cu. Inches
 1 Cu. Meter = 1,000,000 Cu. Centimeters = 35.31 Cu. Feet

TEMPERATURE

$5/9(^{\circ}\text{F} - 32) = ^{\circ}\text{C}$
 212° Fahrenheit is equivalent to 100° Celsius
 90° Fahrenheit is equivalent to 32.2° Celsius
 32° Fahrenheit is equivalent to 0° Celsius
 $9/5^{\circ}\text{C} + 32 = ^{\circ}\text{F}$

APPROXIMATE CONVERSION FACTORS

TO CHANGE	TO	MULTIPLY BY
Inches	Centimeters	2.540
Feet	Meters	0.305
Yards	Meters	0.914
Miles	Kilometers	1.609
Square Inches	Square Centimeters	6.451
Square Feet	Square Meters	0.093
Square Yards	Square Meters	0.836
Square Miles	Square Kilometers	2.590
Acres	Square Hectometers	0.405
Cubic Feet	Cubic Meters	0.028
Cubic Yards	Cubic Meters	0.765
Fluid Ounces	Milliliters	29.573
its	Liters	0.473
arts	Liters	0.946
allons	Liters	3.785
Ounces	Grams	28.349
Pounds	Kilograms	0.454
Short Tons	Metric Tons	0.907
Pound-Feet	Newton-Meters	1.356
Pounds per Square Inch	Kilopascals	6.895
Miles per Gallon	Kilometers per Liter	0.425
Miles per Hour	Kilometers per Hour	1.609

TO CHANGE	TO	MULTIPLY BY
Centimeters	Inches	0.394
Meters	Feet	3.280
Meters	Yards	1.094
Kilometers	Miles	0.621
Square Centimeters	Square Inches	0.155
Square Meters	Square Feet	10.764
Square Meters	Square Yards	1.196
Square Kilometers	Square Miles	0.386
Square Hectometers	Acres	2.471
Cubic Meters	Cubic Feet	35.315
Cubic Meters	Cubic Yards	1.308
Milliliters	Fluid Ounces	0.034
Liters	Pints	2.113
Liters	Quarts	1.057
ers	Gallons	0.264
ms	Ounces	0.035
ograms	Pounds	2.205
Metric Tons	Short Tons	1.102
Newton-Meters	Pounds-Feet	0.738
Kilopascals	Pounds per Square Inch	0.145
ometers per Liter	Miles per Gallon	2.354
ometers per Hour	Miles per Hour	0.621



PIN : 018216-000